

Digital Mass Flow Meter with Display

EXE-FLOW MODEL EX-700 SERIES

Features

- Accurate flow measurement and Excellent function
- Full scale 10sccm to 200SLM
- 11 Rrange standard stock for fast delivery
- RS-485 communication
- RoHS, CE compliant
- Compact design
- Single power supply connection
- Gas select switch



■ EXE-FLOW standard specifications

sensortype		Thermal (EX sensor)	
Applicable gas		N2(Air, H2, He, Ar, O2, CO2 and C.F.)	N2(Air, Ar and C.F.)
Flow range(N2) ※1		10/50/100/500SCCM 1/5/10/20SLM	50/100/200SLM
Response		within 2sec	
Accuracy		± 1% F.S. (25°C)	± 1.5% F.S.(25°C)
Temperature coefficient		± 0.2% F.S./°C (15-35°C)	*200SLM ±0.4% F.S./°C
Repeatability		± 0.2% F.S.	
Proof pressure		980kPa(G)	
Temp.	Working Temp.	5 ~ 50 °C	
	Allowable storage temp	-10 ~ 60 °C	
Materials of gas contact part		SUS316, SUS316L, PTFE, FKM	
Flow output signal		4-20mA standard (Optional 0-5V, 1-5V)	
Digital communication		RS485 (MODBUS protocol, RTU mode)	
Event output		2 x NPN open collector output, integrating pulse output Maximum rating DC30V 50mA	
Multi gas function		Gas selection on display (C.F.)	
Required power supply (DC)		+24VDC (± 10%) 100mA	
Joint ※2		1/4FSWL (standard)	3/8SWL (standard)
Precision Needle valve (option)		MODEL 2412	MODEL 2412D
Dimensions		W76×D30×H80	W76×D34×H90

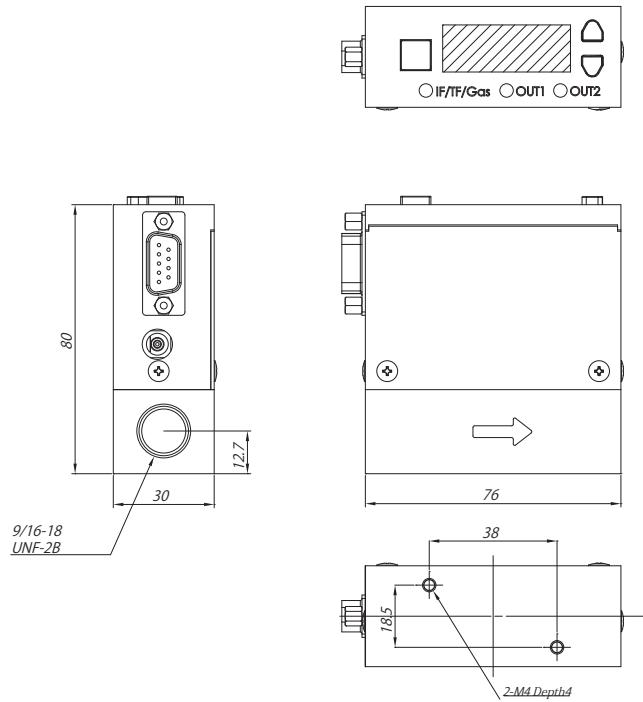
※1 The flow rate calibration units SCCM and SLM indicate a mass flow rate converted to a volume flow rate in cc/min and L/min at 0°C and 1atm.

※2 Contact us for any other joints.

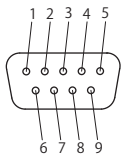
※3 The specifications are subject to change without notice.

Dimensions

Full scale 10,50,100,500SCCM 1,5,10,20SLM



9/16-18
UNF-2B

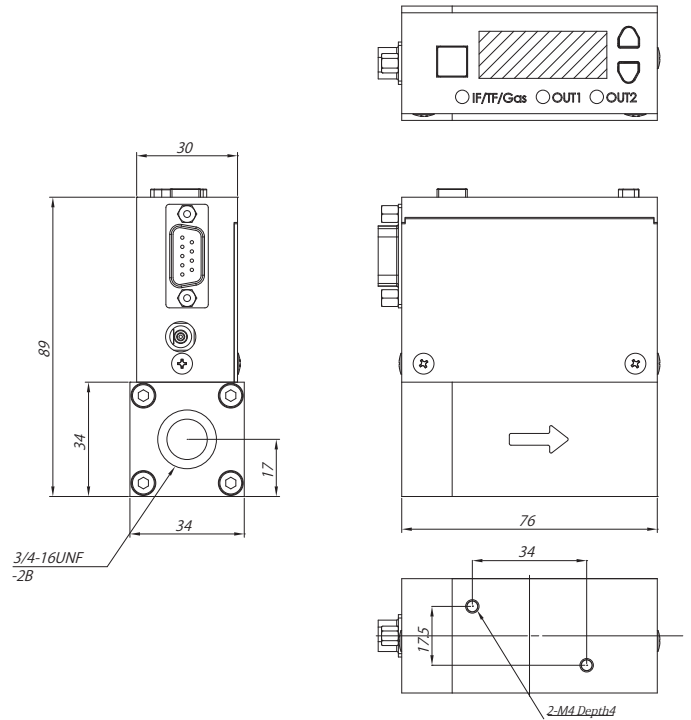


①Dsub connector (male)

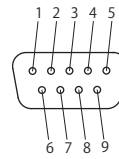
PinNo.	Signal name
1	power +24V
2	power COM
3	OUT1
4	OUT2
5	OUT.COM
6	output Vout
7	TR+(RS485)
8	TR-(RS485)
9	TRCOM(RS485)

※without joints

Full scale 50,100,200SLM



3/4-16UNF
-2B

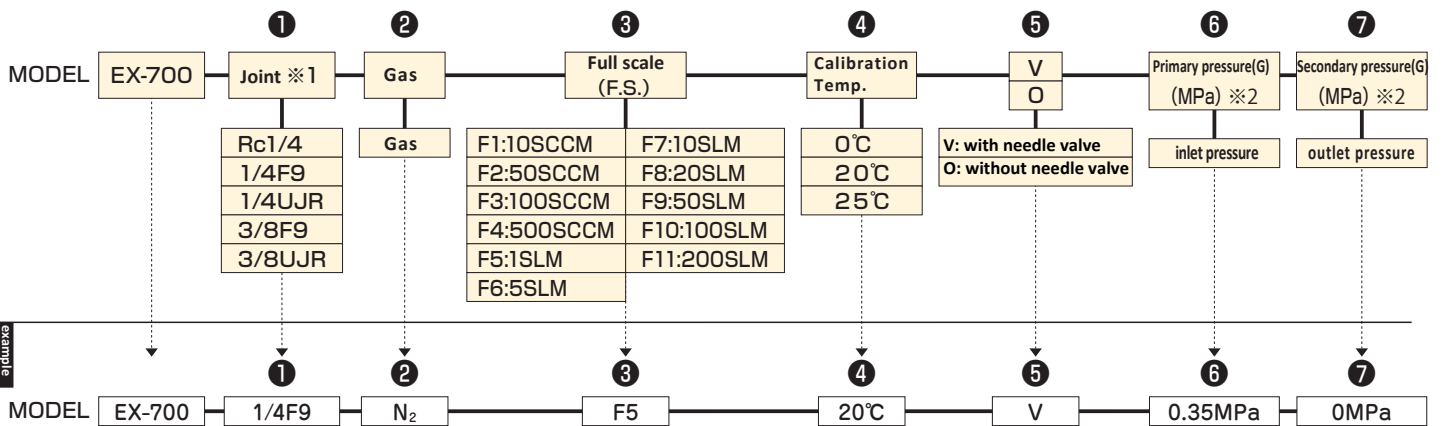


①Dsub connector (male)

PinNo.	Signal name
1	power +24V
2	power COM
3	OUT1
4	OUT2
5	OUT.COM
6	output Vout
7	TR+(RS485)
8	TR-(RS485)
9	TRCOM(RS485)

※without joints

Ordering



※ 1 : Joints would be 3/8SWL or 3/8VCR when the flow rate over 100L.

※ 2 : Pressure condition would be needed when needle valve option is selected.

Contact

Scientific approach to fluids

コジマ株式会社

KOJIMA INSTRUMENTS INC.(OVERSEAS SALES DEPT.)

1-3 Atenoki,Kusauchi,Kyotanabe,Kyoto 610-0311,JAPAN

PHONE : +81-774-68-2626 FAX : +81-774-68-2066

E-mail : overseas@kofloc.co.jp

URL: http://www.kofloc.co.jp/kofloc_e/product/index.html

【Information】

100%-owned local corporation established in Shanghai, China (April 2, 2013)